



MONTHLY MEMBERSHIP PROGRESS REPORT

District 4 L6

Results as of: 6/30/2017

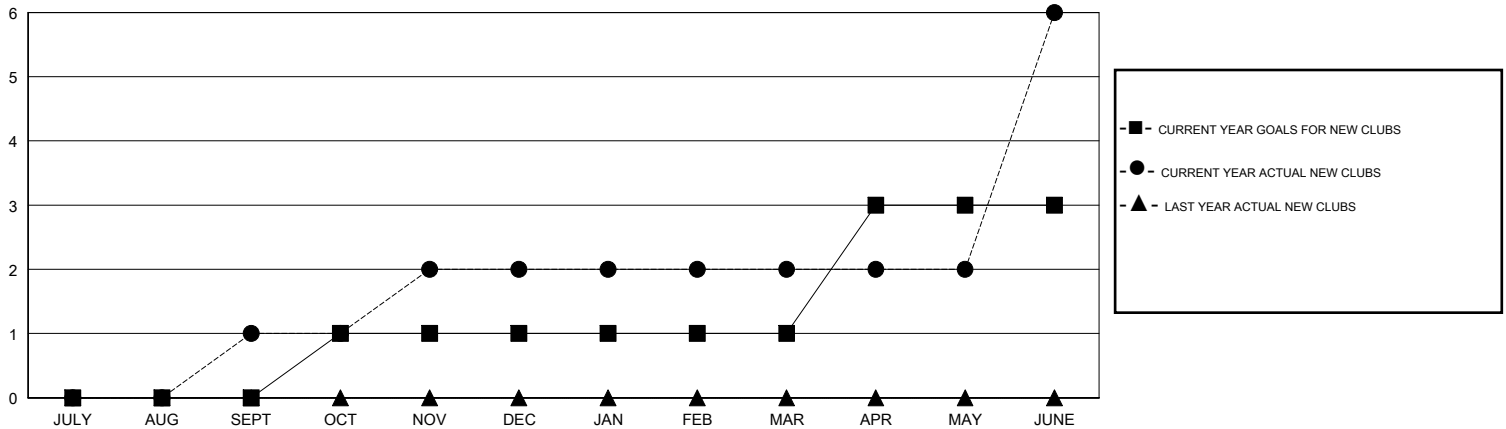
GMT: OPEN

LOCATION CALIFORNIA

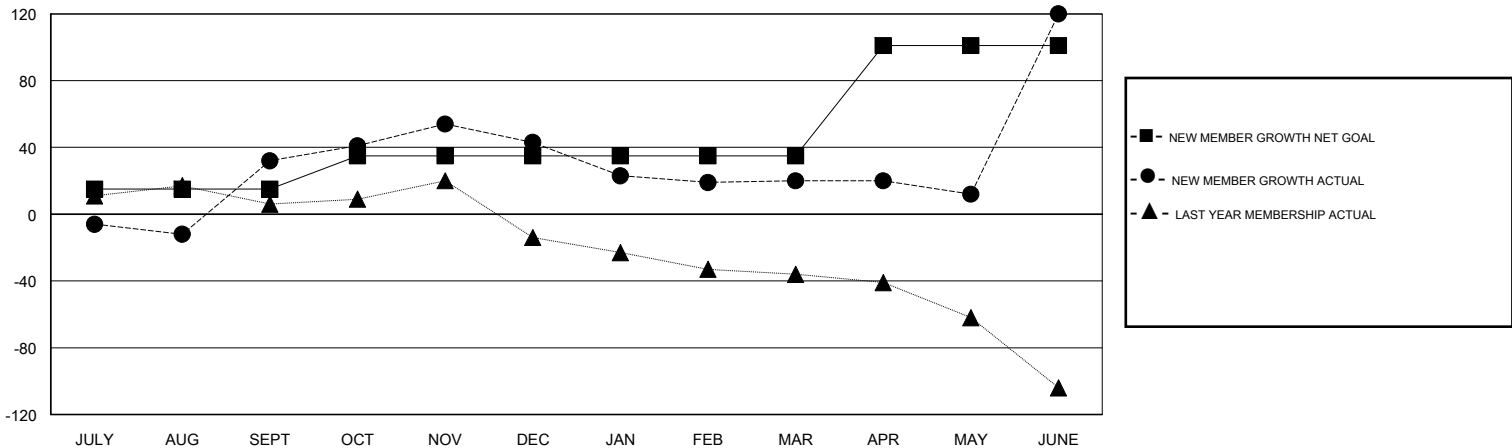
GMT CA

| Clubs | | | | Members | | | |
|-----------------------|---------------|-----------|---------------|-----------------------|--|--|--|
| RESULTS FOR 2016-2017 | | | | RESULTS FOR 2016-2017 | | | |
| QUARTER | NEW CLUB GOAL | NEW CLUBS | DROPPED CLUBS | QUARTER | NEW MEMBER GROWTH NET GOAL (not reinstated or transfers) | NEW MEMBER GROWTH ACTUAL (not reinstated or transfers) | DROPPED MEMBERS ACTUAL (including transfers) |
| JULY/AUG/SEPT | 0 | 1 | 0 | JULY/AUG/SEPT | 15 | 116 | 84 |
| OCT/NOV/DEC | 1 | 1 | 0 | OCT/NOV/DEC | 20 | 76 | 65 |
| JAN/FEB/MAR | 0 | 0 | 1 | JAN/FEB/MAR | 0 | 39 | 62 |
| APR/MAY/JUNE | 2 | 4 | 0 | APR/MAY/JUNE | 66 | 189 | 89 |

GOALS AND ACTUAL NEW CLUBS CUMULATIVE



GOALS AND ACTUAL MEMBERS CUMULATIVE



| | | | |
|------------------|--|---------------------------------|--------------|
| DROPPED CLUBS: 1 | 51 CLUBS OF 68 ADDED 1 OR MORE NEW MEMBERS | <u>GENDER DISTRIBUTION</u> | |
| DROPPED MEMBERS | | MALE | 805 (53.56%) |
| DECEASED | 24 | FEMALE | 698 (46.44%) |
| CLUB CANCELLED | 0 | TOTAL FAMILY UNIT MEMBERS | 380 |
| OTHER | 276 | FAMILY MEMBERS PAYING HALF DUES | 217 |
| TOTAL | 300 | | |

[CLICK HERE FOR CUMULATIVE MEMBERSHIP DATA](#)